



WSV-DJK Rastbüchl

Deutscher Skiverband

OPA Alpencup Ski Jumping Women  
Baptist Kitzlinger Schanze - Rastbüchl  
Saturday, 12. March 2022

OFFICIAL RESULTS  
SKI JUMPING

JURY / COMPETITION MANAGEMENT		JUDGES
Coordinator:	Uwe Mühl (GER)	A: Werner Hellauer (GER)
Technical Delegate (TD):	Uwe Mühl (GER)	B: Rupert Bauer (GER)
TD Assistant:	Jana Kaziskova (CZE)	C: Peter Knoll (GER)
Chief of Competition:	Christian Binder (GER)	D: Günter Högn (GER)
Equipment Control:	Nicole Roth (GER)	E: Robert Leitner (GER)

HILL DATA		WEATHER
Hill Size:	78 meter	sunny
K-Point:	74 meter	Air Temperature: 5 degree
Meter Value:	2.2 Points / meter	Humidity:
Gate Factor:	5.28 Points / Gate	Average Wind:
Wind Factor (Head/Tail):	5,76 / 6,95	Jumping Start: 09:00 Uhr
		Jumping End: 11:52 Uhr

Rang	StNr	Name Verein	Jg Nation	km/h	Weite	W-N.	-A-	-B-	-C-	-D-	-E-	H-N.	Wind	pts	Luke	pts	G-N.	T-N.	PP
<b>Juniorinnen, 74.0 m Schanze</b>																			
1	33	REPINC ZUPANCIC Jerneja Nsk Trzic fmg	02 SLO	82.3	77.5	67.7	17.5	17.0	18.0	17.5	18.0	53.0	0.53	-3.1	9	117.6	235.4	100	
2	30	BODLAJ Taja NSK Trzic FMG	06 SLO	82.2	77.5	67.7	16.5	16.0	17.0	17.0	16.5	50.0	1.62	-9.3	9	108.4	222.1	80	
3	13	KOTHBAUER Sophie UVB Hinzenbach	03 AUT	82.9	72.5	56.7	16.5	16.0	17.5	17.0	17.0	50.5	-0.18	1.3	9	108.5	215.2	60	
4	29	SCHARFENBERG Anna-Fay SC Motor Zella-Mehlis	06 GER	81.2	74.5	61.1	17.0	16.5	17.5	17.0	17.0	51.0	0.94	-5.4	8	106.7			
5	25	JESENKO Jerica SSK NORICA ZIRI	05 SLO	82.4	69.0	49.0	16.0	15.5	16.5	16.5	16.5	49.0	-0.54	3.8	9	101.8	198.4	45	
6	26	KOMAR Tinkara Ssk Bohinj	05 SLO	81.9	71.0	53.4	16.5	16.0	17.5	17.5	17.0	51.0	0.31	-1.8	9	102.6	194.4	40	
6	31	ZEPCHI Lilou Cs Courchevel	06 FRA	81.9	75.5	63.3	15.5	16.0	16.5	16.5	17.0	49.0	1.98	-11.4	9	100.9	194.4	40	
8	24	CHERVET Emma CS CHAMONIX	03 FRA	81.2	68.5	47.9	16.5	16.0	17.0	17.0	16.5	50.0	0.76	-4.4	8	93.5			
9	12	KUEBLER Pia Lilian Sv Zschopau	02 GER	82.4	73.5	58.9	16.0	16.0	15.5	16.0	16.5	48.0	0.49	-2.8	9	104.1	191.7	29	
10	32	VETRIH Nika Ssk Velenje	03 SLO	81.7	77.5	67.7	15.5	16.0	15.5	15.0	15.5	46.5	1.41	-8.1	9	106.1	188.6	26	
11	27	LOGAR Lara Sk Zagorje	03 SLO	82.3	66.5	43.5	15.5	15.5	16.5	16.5	16.5	48.5	0.17	-1.0	9	91.0	187.9	24	
12	7	FEICHT Christina WSV Kiefersfelden	06 GER	82.3	65.0	40.2	15.5	15.5	15.0	17.0	16.0	47.0	-0.29	2.0	9	89.2	187.1	22	
13	15	PIRNOVAR Katarina SK ZAGORJE	06 SLO	82.5	69.0	49.0	16.5	16.0	17.0	16.5	16.5	49.5	0.10	-0.6	8	97.9			
14	14	TYRALLA Maike SK Meinerzhagen	02 GER	81.2	72.0	55.6	16.0	15.5	16.0	16.5	16.5	48.5	1.43	-8.2	9	95.9	185.3	18	
15	28	ZANITZER Martina SCI C.A.I. MONTE LUSSARI A.S.D.	05 ITA	82.3	71.0	53.4	16.0	15.5	16.0	16.5	16.5	48.5	1.43	-8.2	9	93.7	183.4	16	
16	21	KRASOVIC Nika Ssk Ljubno btc	05 SLO	82.1	64.0	38.0	15.0	15.0	15.5	16.5	16.0	46.5	1.13	-6.5	9	78.0	162.0	15	



Rang	StNr	Name Verein	Jg Nation	km/h	Weite	W-N.	-A-	-B-	-C-	-D-	-E-	H-N.	Wind	pts	Luke	pts	G-N.	T-N.	PP
17	2	SCHULLER Sahlra ASVOE SC Hoehenart	04 AUT	81.7	67.5	45.7	15.5	15.0	16.0	16.0	16.5	47.5	0.97	-5.6	9		87.6	158.0	14
18	16	LEBELT Klara VSC Klingenthal	05 GER	82.0	60.0	29.2	16.0	15.0	16.0	16.0	16.0	48.0	0.73	-4.2	9		73.0	156.5	13
19	20	DURAND POUURET Lexane Autrans	06 FRA	81.4	56.5	21.5	15.5	15.0	15.5	16.5	16.5	47.0	0.28	-1.6	9		66.9	146.8	12
20	9	NEUMANN Amelie WSV Isny	06 GER	81.6	60.5	30.3	14.5	15.5	14.5	16.0	16.0	46.0	-0.18	1.3	9		77.6	145.8	11
21	6	DRAX Ronja Sc Partenkirchen	03 GER	80.9	58.0	24.8	15.5	15.0	15.5	16.0	16.0	47.0	0.63	-3.6	8		68.2		
22	4	THANNHEIMER Amelie Sc Oberstdorf	03 GER	81.5	61.0	31.4	15.5	15.0	15.5	16.0	16.0	47.0	0.61	-3.5	9		74.9	144.4	9
23	19	KOVACIC Maja SMUCARSKI KLUB TRIGLAV KRANJ	06 SLO	80.5	58.5	25.9	15.5	15.0	15.5	16.5	16.0	47.0	0.93	-5.4	9		67.5	141.9	8
24	5	BUECHEL Alina Nordic Club Liechtenstein	04 LIE	80.9	65.5	41.3	16.0	15.5	16.5	16.5	16.5	49.0	2.76	-15.9	8		74.4		
25	1	HOEGER Magda Wsv Reit im winkl	06 GER	81.0	60.5	30.3	15.5	15.0	16.0	16.0	16.0	47.5	0.07	-0.4	9		77.4	140.6	7
26	11	KOSIR Taja SSK ILIRIJA	06 SLO	80.6	56.0	20.4	15.5	15.0	15.5	15.5	16.0	46.5	0.64	-3.7	8		63.2		
27	17	HOLZ Alvine WSV 1923 Bad Freienwalde	04 GER	81.1	56.0	20.4	15.5	15.0	15.0	16.0	16.0	46.5	-0.09	0.6	9		67.5	140.3	6
28	18	KOELLE Selina SC Degenfeld	05 GER	81.4	59.0	27.0	15.5	16.0	16.0	15.5	16.0	47.5	0.29	-1.7	8		72.8		
29	3	HITZINGER Kathrin WSV-DJK Rastbüchl	06 GER	80.3	58.5	25.9	16.0	15.5	16.0	17.0	16.0	48.0	0.76	-4.4	9		69.5	138.0	5
30	22	VUERICH Noelia SCI C.A.I. MONTE LUSSARI A.S.D.	06 ITA	80.2	55.0	18.2	16.0	15.5	16.5	16.5	15.5	48.0	-0.33	2.3	8		68.5		
31	8	EBERLE Joanna SC Oberstdorf	05 GER	81.9	60.0	29.2	15.5	15.0	15.5	16.0	16.0	47.0	0.91	-5.2	9		71.0	137.2	4
32	10	FAERBER Nadine TSV Buchenberg	06 GER	80.7	63.5	36.9	15.0	15.5	15.5	16.5	16.0	47.0	1.91	-11.0	9		72.9	130.6	3
33	23	MARCATO Asia BACHMANN SPORT COLLEGE S.S.D. A R.L.	03 ITA	80.7	65.5	41.3	10.5	15.5	10.5	9.0	12.0	33.0	2.88	-16.6	8		57.7		
				81.3	61.0	31.4	14.5	15.5	14.5	16.0	16.0	46.0	1.64	-9.4	9		68.0	128.6	2
				80.3	54.5	17.1	15.0	15.0	14.5	16.0	15.5	45.5	0.34	-2.0	8		60.6		
				81.9	60.0	29.2	8.0	15.0	10.0	9.5	13.0	32.5	0.60	-3.5	9		58.2	128.1	1
				81.2	60.0	29.2	14.5	15.0	15.0	16.0	15.0	45.0	0.75	-4.3	8		69.9		
				80.9	52.5	12.7	15.5	15.0	15.5	16.0	15.5	46.5	0.02	-0.1	9		59.1	121.5	
				80.7	54.5	17.1	15.5	15.5	15.5	16.0	15.5	46.5	0.20	-1.2	8		62.4		
				81.5	61.0	31.4	15.5	15.0	15.0	15.5	15.5	46.0	1.62	-9.3	9		68.1	120.4	
				81.4	48.0	2.8	14.0	14.5	14.0	15.5	15.0	43.5	-0.87	6.0	8		52.3		
				81.3	55.0	18.2	7.5	8.0	7.0	8.5	8.0	23.5	0.46	-2.6	9		39.1	84.1	
				81.2	47.0	.6	13.5	14.0	13.5	16.0	14.5	42.0	-0.34	2.4	8		45.0		

From the referee's protocol

Entered: 33  
Total ranked: 33

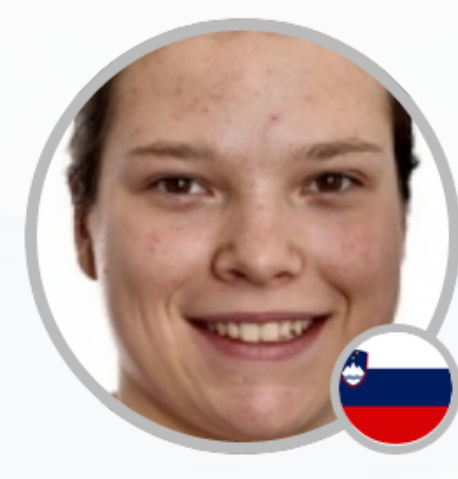
Statistics 1st Round	MIN.	AVG.	MAX.
Distance [m]:	52.5	65.4	77.5
Speed [km/h]:	80.3	81.7	82.9
Wind [m/s]:	-0.75	0.72	2.02

Statistics 2nd Round	MIN.	AVG.	MAX.
Distance [m]:	47.0	63.8	79.0
Speed [km/h]:	80.2	81.2	82.1
Wind [m/s]:	-0.87	0.73	2.88

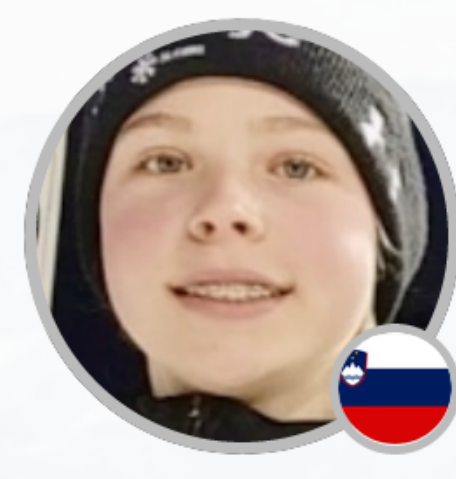
For the correctness:

(Gruber)





**1ST | 219.7**  
REPINC ZUPANCIC  
Jerneja



**2ND | 217.4**  
BODLAJ Taja



**3RD | 211.7**  
KOTHBAUER Sophie

1	33	7740	REPINC ZUPANCIC Jerneja	2002	SLO	77.0 108.5	73.5 111.2	<b>219.7</b>	
2	31	219662	BODLAJ Taja	2006	SLO	77.0 112.5	73.0 104.9	<b>217.4</b>	-2.3
3	18	7635	KOTHBAUER Sophie	2003	AUT	73.5 106.9	73.5 104.8	<b>211.7</b>	-8.0
4	24	8552	CHERVET Emma	2003	FRA	71.0 97.3	75.0 102.4	<b>199.7</b>	-20.0
5	12	7381	KUEBLER Pia Lilian	2002	GER	75.5 87.4	73.0 105.0	<b>192.4</b>	-27.3
6	26	8214	KOMAR Tinkara	2005	SLO	69.0 90.3	71.0 97.7	<b>188.0</b>	-31.7
7	30	8303	ZEPCHI Lilou	2006	FRA	64.0 80.7	72.5 106.2	<b>186.9</b>	-32.8
8	10	8300	FEICHT Christina	2006	GER	68.0 87.7	71.0 98.9	<b>186.6</b>	-33.1
9	29	219810	SCHARFENBERG Anna-Fay	2006	GER	69.0 90.2	69.0 96.3	<b>186.5</b>	-33.2
10	32	8357	VETRIH Nika	2003	SLO	70.5 86.0	71.5 98.5	<b>184.5</b>	-35.2
11	14	219835	PIRNOVAR Katarina	2006	SLO	68.5 90.2	69.0 91.8	<b>182.0</b>	-37.7
12	28	7878	LOGAR Lara	2003	SLO	68.5 88.7	67.0 88.6	<b>177.3</b>	-42.4
13	25	8438	JESENKO Jerica	2005	SLO	67.0 88.7	66.0 86.7	<b>175.4</b>	-44.3
14	16	8081	LEBELT Klara	2005	GER	67.0 85.9	63.0 81.2	<b>167.1</b>	-52.6
15	27	8082	ZANITZER Martina	2005	ITA	65.0 85.4	61.0 80.9	<b>166.3</b>	-53.4
16	3	8204	SCHULLER Sahra	2004	AUT	66.0 84.5	62.0 75.7	<b>160.2</b>	-59.5
17	4	7668	THANNHEIMER Amelie	2003	GER	62.5 80.4	61.5 77.4	<b>157.8</b>	-61.9
18	20	219657	DURAND POUURET Lexane	2006	FRA	66.0 83.1	60.5 71.5	<b>154.6</b>	-65.1
19	21	8460	KRASOVIC Nika	2005	SLO	63.0 75.9	66.5 78.3	<b>154.2</b>	-65.5
20	19	219732	KOVACIC Maja	2006	SLO	61.5 76.9	63.0 76.2	<b>153.1</b>	-66.6
21	7	8119	DRAX Ronja	2003	GER	59.5 66.3	66.5 83.6	<b>149.9</b>	-69.8
22	15	219808	HOLZ Alvine	2004	GER	59.5 67.9	61.5 75.4	<b>143.3</b>	-76.4
23	11	219869	KOSIR Taja	2006	SLO	60.0 71.6	59.0 71.2	<b>142.8</b>	-76.9
24	22	8453	VUERICH Noelia	2006	ITA	58.5 68.1	59.0 72.3	<b>140.4</b>	-79.3
25	8	219806	FAERBER Nadine	2006	GER	60.0 72.1	59.0 67.1	<b>139.2</b>	-80.5

We use cookies to improve your experience. By using our site you are accepting our Cookie Policy.

[Cookie Policy](#) [OK](#) [No Thanks](#)



CALENDAR & RESULTS

ATHLETES

LIVE

NEWS & MEDIA

MEMBER SECTION



CROSS-COUNTRY

**SKI JUMPING**

NORDIC COMBINED

ALPINE

FREESTYLE & FREESKI

SNOWBOARD

MORE DISCIPLINES

INSIDE FIS



Rank	Bib	FIS code	Athlete	Year	Nation	Distance 1 Points 1	Distance 2 Points 2	Tot. Points	Diff. Points
30	9	219716	NEUMANN Amelie	2006	GER	52.0 58.7	57.0 69.7	<b>128.4</b>	-91.3
31	23	219645	MARCATO Asia	2003	ITA	56.0 58.2	54.0 56.0	<b>114.2</b>	-105.5
32	5	8284	BUECHEL Alina	2004	LIE	50.0 49.1	54.5 57.9	<b>107.0</b>	-112.7

